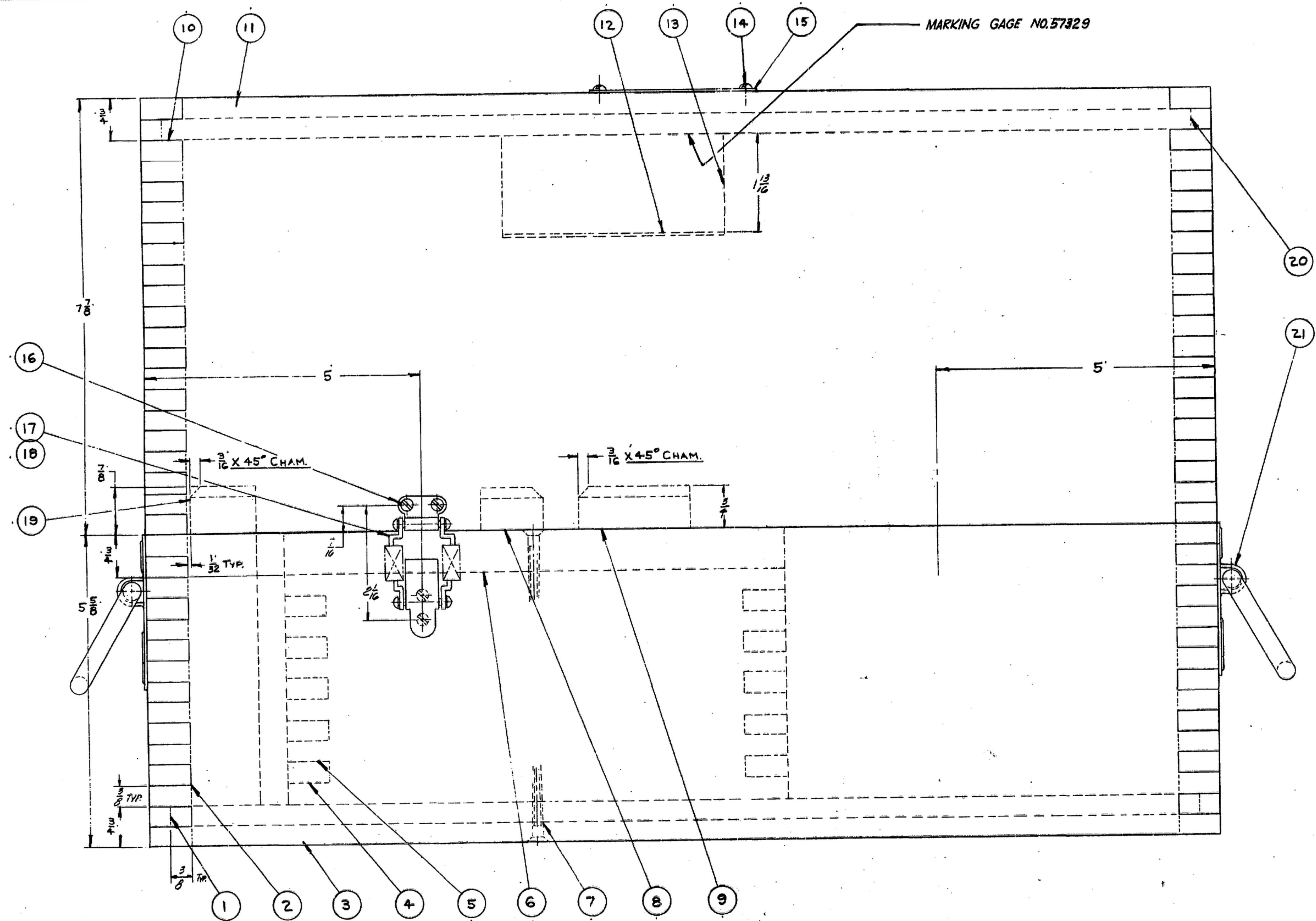


SYM	DESCRIPTION	DATE	APPROVAL
-----	-------------	------	----------

NOTE:
*FOR INFORMATION ONLY, CONTRACTOR MAY AT HIS OPTION DEVIATE FROM THESE PROCESS DETAILS

NOTICE: THESE APPROVED DRAWINGS, SPECIFICATIONS, OR OTHER DATA ARE USED FOR THE PREPARATION OF CONTRACT DOCUMENTS AND FOR THE CONSTRUCTION OF THE WORK THEREUNDER. THE CONTRACTOR SHALL BE RESPONSIBLE FOR THE ACCURACY OF THE DATA AND FOR THE FACT THAT THE APPROVED DRAWINGS, SPECIFICATIONS, OR OTHER DATA ARE USED FOR THE PREPARATION OF CONTRACT DOCUMENTS AND FOR THE CONSTRUCTION OF THE WORK THEREUNDER. THE CONTRACTOR SHALL BE RESPONSIBLE FOR THE ACCURACY OF THE DATA AND FOR THE FACT THAT THE APPROVED DRAWINGS, SPECIFICATIONS, OR OTHER DATA ARE USED FOR THE PREPARATION OF CONTRACT DOCUMENTS AND FOR THE CONSTRUCTION OF THE WORK THEREUNDER.

*THIS DRAWING WAS REVISIONED BY THE CONTRACTOR AND MAY BE REVISIONED AND USED IN CONNECTION WITH ANY SUBSEQUENT REVISIONS TO THE DRAWING.



- NOTES:
- SUPPLIED BY:
1. CORBIN CABINET LOCK DIVISION
THE AMERICAN HARDWARE CORPORATION
NEW BRITAIN, CONNECTICUT. OR EQUAL
 2. McMASTER-CARR SUPPLY CO.
640 WEST LAKE STREET
CHICAGO 6, ILLINOIS. OR EQUAL
 3. COMMERCIAL DOUGLAS FIR PLYWOOD EXTERIOR TYPE,
GRADE SOUND 2, SIDES EXTERIOR PER SPEC. MIL-P-66.
 4. ALL JOINTS INCLUDING BOTTOM SHALL BE BONDED WITH
ADHESIVE PER SPEC. MIL-A-397 TYPE I, CLASS I, AND
APPLIED PER SPEC. MIL-A-3483.
 5. BREAK ALL UNNECESSARY SHARP EDGES.
 6. BEFORE ASSEMBLY OF HARDWARE, PADDING AND
NAMEPLATE, ALL INSIDE AND OUTSIDE SURFACES
OF CASE SHALL BE FINISHED AS FOLLOWS SAND
AND APPLY ONE COAT OF WOOD SEALER PER
SPEC MIL-S-18518, STENCIL AS INDICATED AND
APPLY TWO COATS OF CLEAR SPA VARNISH
PER SPEC TT-V-119.

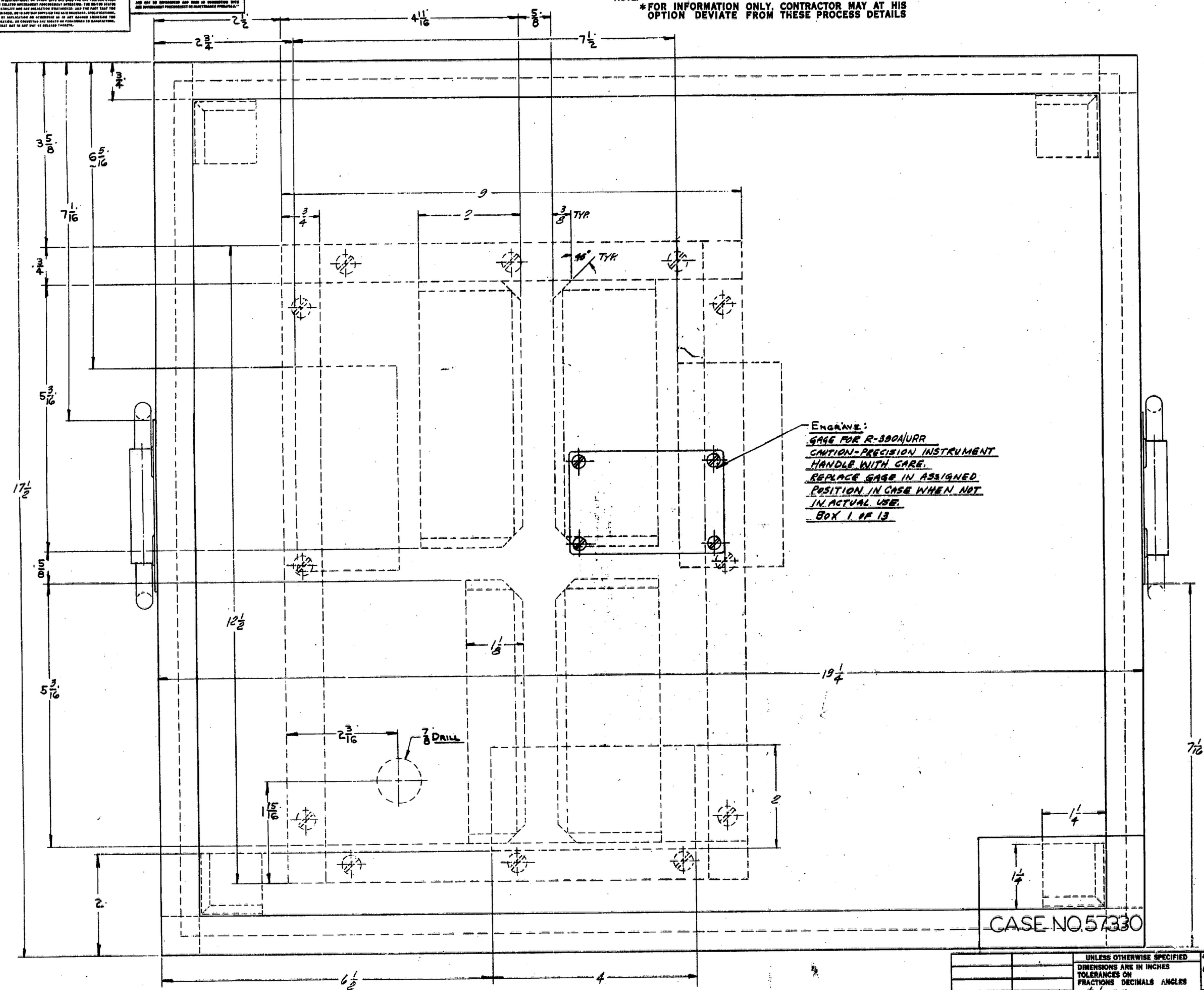
NO.	QTY	DESCRIPTION	MATL	MATL SPEC	NOTES
21	2	21 CREST HANDLE McMASTER-CARR			2
20	1	20 TOP 3/4 x 16 3/4 x 18 1/2	PLYWOOD		
19	4	19 SUPPORT 1 1/4 SQ. x 5 1/4	HARDWOOD	MM-L-736	
18	4	18 CORBIN STRIKE #15794			1
17	4	17 CORBIN CATCH #15824			1
16	16	16 1/2 x 1/2 RD. HD. WOOD SCR	BRASS		
15	1	15 TAG TO SUIT.	AL. ALLOY	8Q-A-318	
14	4	14 1/2 x 1/2 RD. HD. WOOD SCR	BRASS		
13	3	13 BLOCK 1 1/4 x 2 x 4	HARDWOOD	MM-L-736	
12	3	12 PAD 1/16 x 2 x 4	FELT	C-F-206	
11	2	11 SIDE 3/4 x 7 1/2 x 18 1/4	PLYWOOD		
10	2	10 SIDE 3/4 x 7 1/2 x 17 1/2	PLYWOOD		
9	3	9 RAIL 3/4 x 2 x 5 1/2	PLYWOOD		
8	1	8 RAIL 3/4 x 1 1/2 x 5 1/2	PLYWOOD		
7	24	7 #10 x 1 1/2 RAT. HD. WOOD SCR	BRASS		
6	1	6 TOP 3/4 x 5 x 12 1/2	PLYWOOD		
5	2	5 SIDE 3/4 x 4 1/2 x 8	PLYWOOD		
4	2	4 SIDE 3/4 x 4 1/2 x 12 1/2	PLYWOOD		
3	2	3 SIDE 3/4 x 5 1/2 x 18 1/4	PLYWOOD		
2	2	2 SIDE 3/4 x 5 1/2 x 17 1/2	PLYWOOD		
1	1	1 SM-D-57330-1 BOTTOM 3/4 x 16 3/4 x 18 1/2	PLYWOOD		

UNLESS OTHERWISE SPECIFIED DIMENSIONS ARE IN INCHES TOLERANCES ON FRACTIONS DECIMALS ANGLES ± 1/32		ORDER # 08719-PH-55-93 SIGNAL CORPS REVIEWED PNE APPROVED M.H. PNE DATE 27-10-55 SCALE FULL		CASE, GAGE DEPARTMENT OF THE ARMY SIGNAL CORPS ENGINEERING LABORATORIES FORT MONMOUTH NEW JERSEY SM-D-57330 SHEET 1 OF 2	
APPLICATION		NEXT ASSY USED ON		WHEN REFERRING TO THIS DRAWING STATE DRAWING NO., APPLICABLE ISSUE SYMBOL, AND DATE.	

SYM	DESCRIPTION	DATE	APPROVAL
-----	-------------	------	----------

NOTE: *FOR INFORMATION ONLY, CONTRACTOR MAY AT HIS OPTION DEVIATE FROM THESE PROCESS DETAILS

UNLESS OTHERWISE SPECIFIED, DIMENSIONS ARE IN INCHES. DIMENSIONS ON FRACTIONS ON DECIMALS ANGLES. DIMENSIONS ON FRACTIONS ON DECIMALS ANGLES. DIMENSIONS ON FRACTIONS ON DECIMALS ANGLES. DIMENSIONS ON FRACTIONS ON DECIMALS ANGLES.



TOP VIEW OF BOX.

ENGINE:
 GAGE FOR R-300/URR
 CAUTION-PRECISION INSTRUMENT
 HANDLE WITH CARE
 REPLACE GAGE IN ASSIGNED
 POSITION IN CASE WHEN NOT
 IN ACTUAL USE.
 BOX 1 OF 13

CASE NO. 57330

PART NO.	DESCRIPTION	MATL.	MATL. SPEC.
----------	-------------	-------	-------------

UNLESS OTHERWISE SPECIFIED DIMENSIONS ARE IN INCHES TOLERANCES ON FRACTIONS DECIMALS ANGLES ± 1/32		ORDER# 08719-PH-55-53 SIGNAL CORPS REVIEWED PNE APPROVED MHP PNE DATE 27-10-55 SCALE FULL	CASE, GAGE	DEPARTMENT OF THE ARMY SIGNAL CORPS ENGINEERING LABORATORIES FORT MONMOUTH NEW JERSEY SM-D-57330 SHEET 2 OF 2
60-61-57592 NEXT ASSY USED ON APPLICATION	LIST OF MATERIAL	WHEN REFERRING TO THIS DRAWING STATE DRAWING NO., APPLICABLE ISSUE SYML		